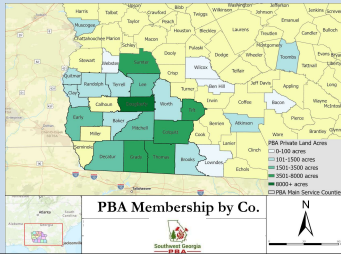


Applying a Culture of Fire to Smaller Properties in Southwest Georgia



1

Speakers Intent: Thoughts on helping achieve success

- Building of Ryan's points
- In many cases, areas will not have a culture supporting prescribed fire, much less a PBA, a FTE coordinator can help change that.
- Landowner involvement is KEY, as the PBA grows, landowners must take a leadership role.





2

- Don't stress acreages, number of burns and number of attendees to burns is likely a better indication of success
- My PBA is more about impacting the culture of prescribed fire, not competing with other fire practitioners in my area.
- Small victories really matter "wins on the board"



3



- A PBA is for all conservation advocates, for us, Nomex is not required, though PPE is (Blue Jean Burning).
- Inclusivity often means meeting people where they're at and working from there.
- We value diverse perspectives and encourage everyone to contribute their unique insights, regardless of formal qualifications

4

Spark Plug and..... Lug nut?

- Has been roles being passed around to create success
- I wouldn't call any of my PBA members a Lug nut
- If we are going to use a car example, I suggest altering this terminology to.....

5

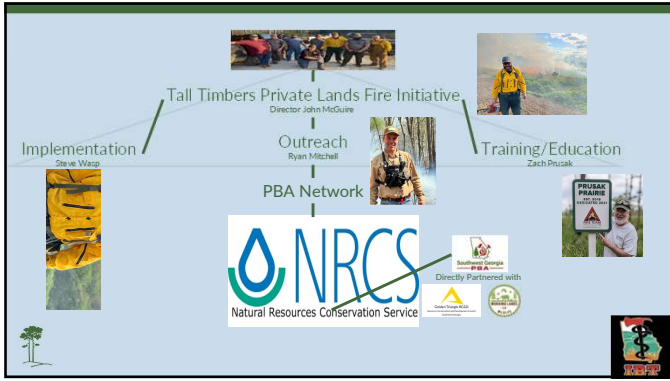
Spark Plug and Pistons



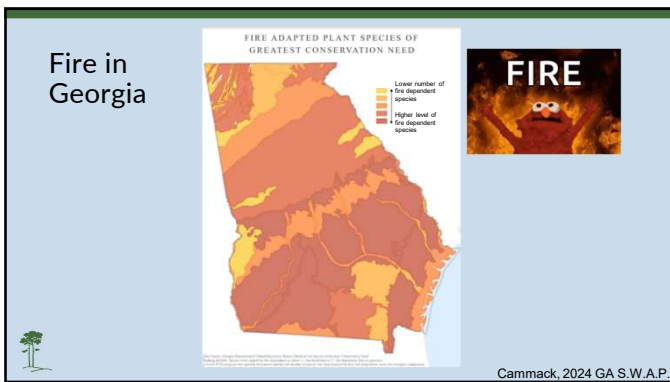
What is a Piston?
A piston is a key component in a reciprocating engine. A piston is pretty much just a solid cylinder of metal that moves up and down in a similarly cylindrical hollow in the engine block.



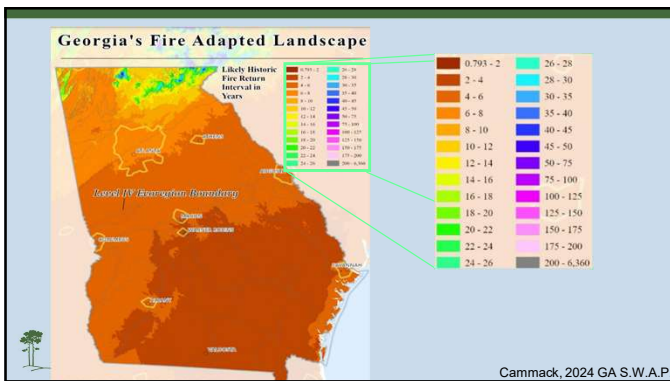

6



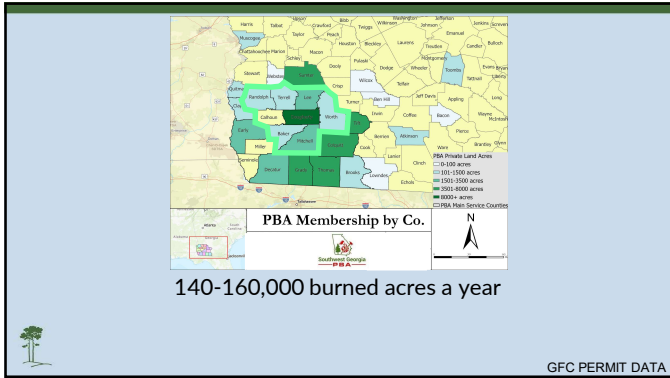
7



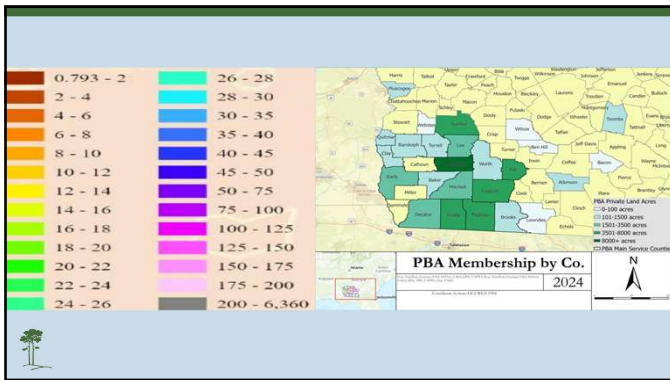
8



9



10



11

The Southern culture of fire is based on partnership

GEORGIA
DEPARTMENT OF NATURAL RESOURCES

GEORGIA FORESTRY COMMISSION

NRCS
NATURAL RESOURCE CONSERVATION SERVICE

GEORGIA
WILDLIFE RESOURCES DIVISION

QUAIL forever
The Habitat Organization

12

What does partnership entail in SWGA?

- Apart from fiscal support, partners are quick to send support to events and burns where applicable.
- One message, many voices.
- A strong commitment from partners to support work being done to improve habitat.



13



14

Addition of PBAs into The State Wildlife Action Plan

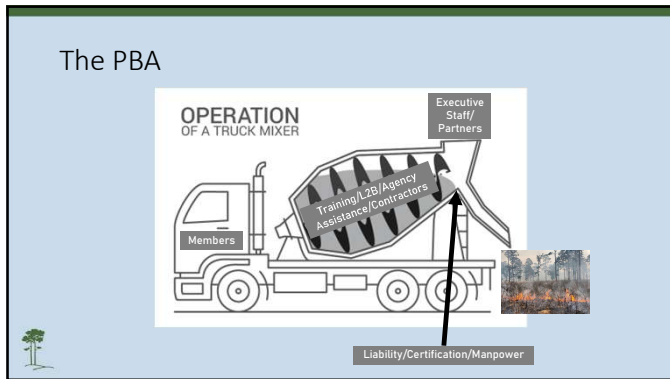
"Burn Associations (PBAs) and supported by our burn team and outreach coordinator staff. A PBA's action through increasing the culture of prescribed fire is gained through the increased number of interactions that can be achieved with landowners in their areas of operation. Being largely landowner driven organizations, this involvement also gives them more education and influence on how their property is being managed. A landowner's helping landowners model also takes aim at reducing perceived barriers created by property lines, in many cases helping a larger audience of landowners meet to well managed properties who lack the equipment or knowledge to enact similar management on their properties. PBA support staff can take the time to explain the "why" behind many ecological best management practices, specifically surrounding implementation of prescribed fire. This often occurs during one on one site visits as well as through the PBA's implementation of "Showdays" prescribed fire events. Courses PBAs take usually focus on getting properties ready to conduct a prescribed fire and are not forestry or wildlife consultations, but include how fire may improve or other properties of both. PBA coordinators facilitate courses with topics covering fire ecology, fire history, fire applications, smoke management, or the economics of prescribed fire. These courses draw from many other disciplines in natural resources, such as wildlife biology, soil science, and forestry. Finally, while state and federal interests often have large stakes in such organizations, PBAs can often reach landowners who need one degree more separation from state or federal oversight. With Georgia being 93% private land, enrolling private landowners and educating them about the benefits of fire will continue to be one of the highest priorities. To aid in this, a Savannah River PBA coordinator position has been created and filled."



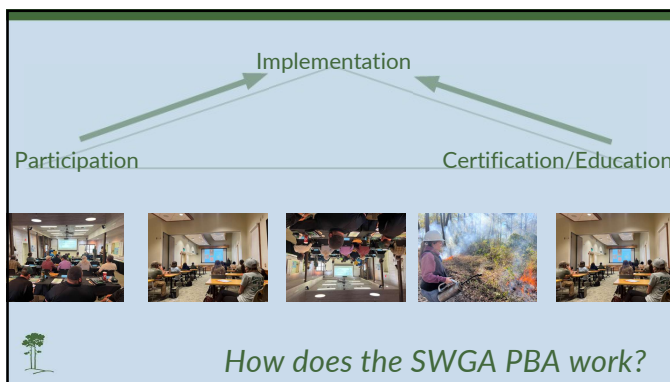
- PBAs, supported by coordinators, improve the culture of prescribed fire by increasing interactions with landowners.
- PBAs provide education and influence on property management, reducing perceived barriers and promoting prescribed fire practices.
- PBAs conduct site visits to prepare properties for prescribed fire and offer courses on fire ecology, fire history, and fire applications.



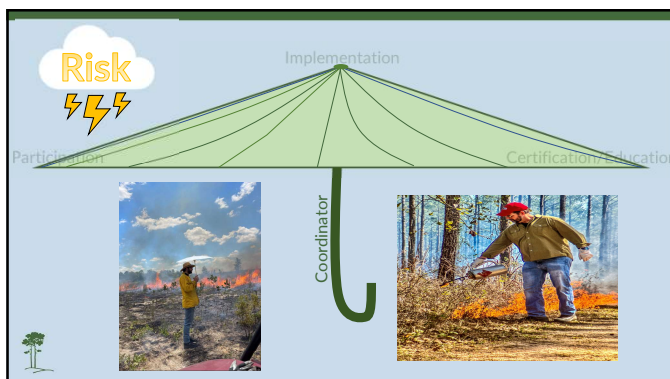
15



16



17



18

A few months in my PBA: from the landowners perspective







19

John L Burner has attended one of our Learn to Burns in the Past

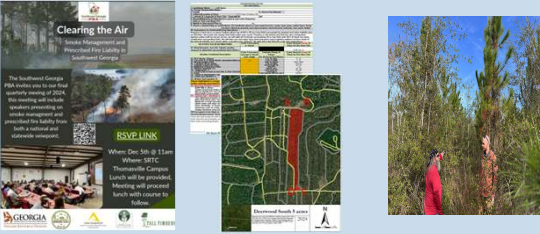

He emails me to get a site visit set up, he already has an idea of what he wants to get burned.

He has not written his burn plan and wants to make sure his property is ready to be burned


20

The flyer comes out for the Q1 meeting, the call goes out to finalize burn units for the year and get burn plans written. Another Learn to Burn for PBA members is also offered during this time

21



John L Burner begins to put "Sweat Equity" into the PBA by attending events, helping his neighbors become involved, and helping us burn. Learning while doing so.



22

He preps his own property to be burned, works with me to get maps made and to review burn plans

A burn window opens and he is able to get his property burned with PBA assistance.



23


All burns are followed up by a tailgate review!



24

And this happens, again and again for

- 105 Members
- 2024, 64 Burns for >3400 acres
- Over 30 unique properties burned this year.
- 6 Events this year, 200+ students trained
- Two women-centric fire classes (Learn 2 Burn - 45 attended) and Certification course (17 students).



25

Some of the Successes for 2024




Fire & Longleaf 201: Advancing Fire Management Goals in Longleaf Ecosystems

Fire & Longleaf 201



26

Southwest GA PBA Burns Jan 2023- xxx 2024





Southwest GA PBA Burns Jan 2023-xxx 2024

Category	Count	Percentage
Burn	65	60.7%
Advise	38	31.8%
Aid	6	8.6%

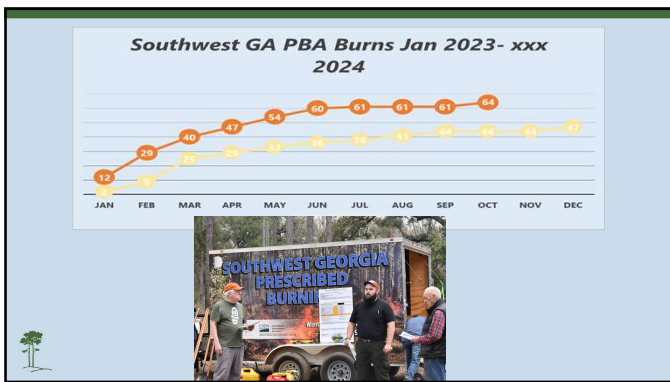
27

Future Plans in Action

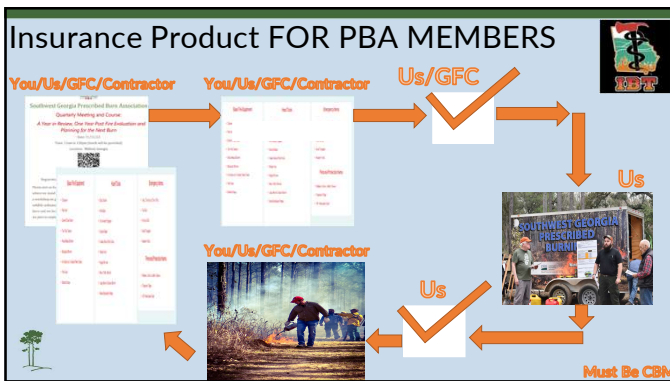
- Prescribed Burning Insurance
- Continually expanding Eboard
- Further College and Tech School impact and involvement
- Keep building demand for burn trailers

28



29



30



31
