



1

---

---

---

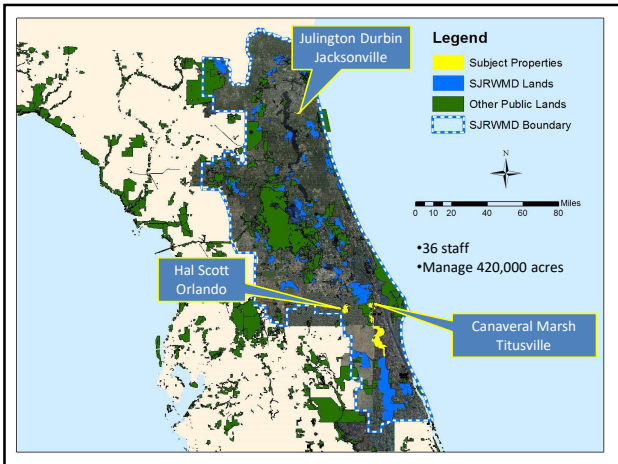
---

---

---

---

---



2

---

---

---

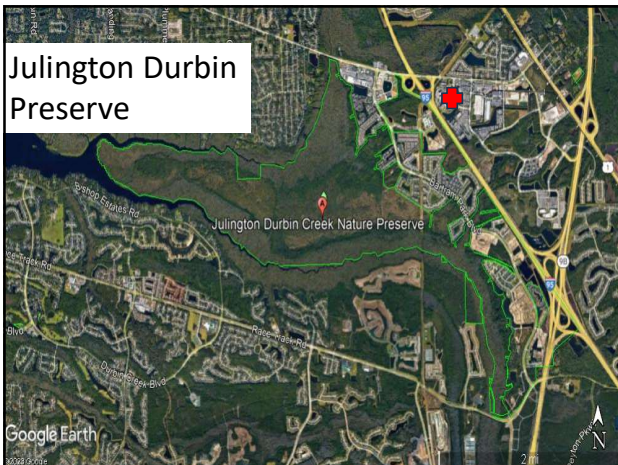
---

---

---

---

---



3

---

---

---

---

---

---

---

---



4

---

---

---

---

---

---

---

---



5

---

---

---

---

---

---

---

---



6

---

---

---

---

---

---

---

---





7

---

---

---

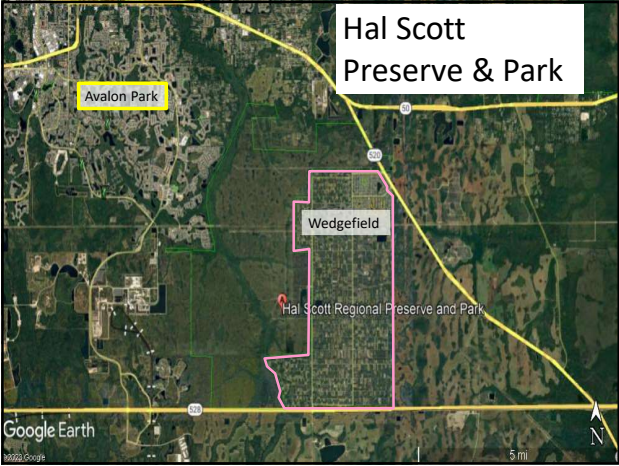
---

---

---

---

---



8

---

---

---

---

---

---

---

---



9

---

---

---

---

---

---

---

---

HOME | ABOUT FIREWISE | CONTACT | EVENTS | FOR MEDIA SEARCH

Firewise Communities Courses and Training Information and Resources Firewise Blog

Firewise Communities > Firewise CommunitiesUSA Recognition Program > Community Stories > Florida > Wedgefield

**Wedgefield**

Wedgefield is a development of over 6,500 acres of planned 1/4 acre and one- to five-acre home sites located about 30 miles east of Orlando, Florida. Approximately 1,300 homes have been constructed there. Many lots are being held as investments by absentee owners. Since construction began in Wedgefield, both prescribed and controlled fire activities have been curtailed there. As a result, vegetative fuels have accumulated and pose an increasing wildfire risk. The development contains many dead-end roads and its power lines are above ground. It has fire hydrants only in the one square mile where the 1/4 acre lots are located and the nearest fire station is ten miles away.

In 2001, Wedgefield formed a Firewise Board that oversaw the creation of a fuel break using a Florida Division of Forestry Wildfire Mitigation Team. The team spent one week mowing the outside perimeter of Wedgefield's most vulnerable areas. In September, the Board developed an implementation plan that contained two "first steps"—(1) presenting an education workshop and (2) addressing local

10

---

---

---

---

---

---

---

---

---

---



11

---

---

---

---

---

---

---

---

---

---



12

---

---

---

---

---

---

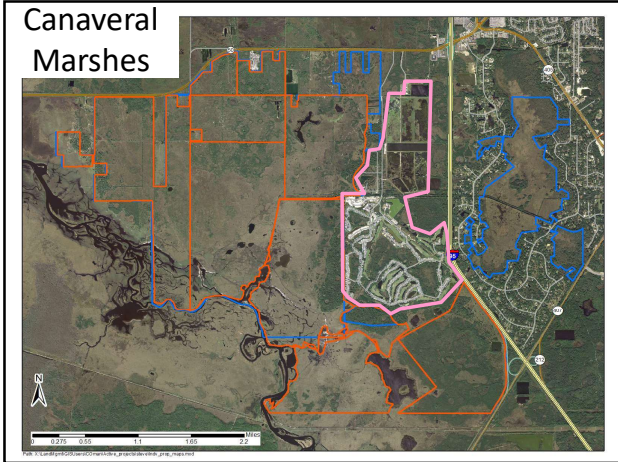
---

---

---

---





13

---

---

---

---

---

---

---

---



14

---

---

---

---

---

---

---

---



15

---

---

---

---

---

---

---

---



16

---

---

---

---

---

---

---

---



17

---

---

---

---

---

---

---

---



18

---

---

---

---

---

---

---

---

# What are the tools for success?

- Communicate
- Cooperate
- Build confidence
- Manage our SMOKE



19

---

---

---

---

---

---

---

---

# Communicate



- Technology and hands-on methods ensure accurate timber count
- Land managers have a variety of preservation and management tools

... as water in the cool months, usually just once evi

## District news

February 11, 2013  
**Controlled burn today at Stokes Landing Conservation Area in St. Johns County**  
 The District is conducting a 170-acre controlled burn today on the marsh edge of Stokes Landing Conservation Area in St. Johns County for fuel reduction

February 11, 2013  
**Controlled burn today at Lake Washington in Brevard County**  
 The District is conducting a 2,100-acre prescribed burn today on the west side of Lake Washington in Brevard County to reduce the chances of wild fires

20

---

---

---

---

---

---

---

---

# Communicate



21

---

---

---

---

---

---

---

---





22

---

---

---

---

---

---

---

---

### Communicate

- Before Fire Season
  - Prescribed Fire Awareness Week
  - Homeowner Association meetings
  - Firewise Awareness Day
  - Newsletters
- Day before and day of
  - Press releases
  - Phone trees
  - Closed circuit TV
  - Reverse 911 or contract notification system

A firefighter in a bright yellow jacket and helmet is shown in a field, using a tool to manage a prescribed fire. Other firefighters are visible in the background.

23

---

---

---

---

---

---

---

---

### Cooperate

With the other fire managers.  
With the neighborhoods.

An outdoor community outreach event is taking place under a white canopy. Several people are gathered around informational displays and brochures. A sign above the displays reads "St. Johns River Water Management Agency".

24

---

---

---

---

---

---

---

---



### Build Confidence

Homeowners recognize big red fire trucks

Make sure people and equipment visible



25

---

---

---

---

---

---

---

---

### Manage the smoke



- Don't compromise on wind speed or direction!

26

---

---

---

---

---

---

---

---

### Evidence of Success



27

---

---

---

---

---

---

---

---



28

---

---

---

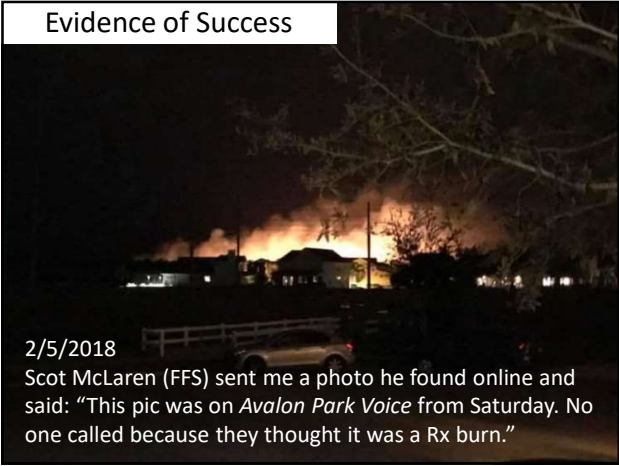
---

---

---

---

---



29

---

---

---

---

---

---

---

---